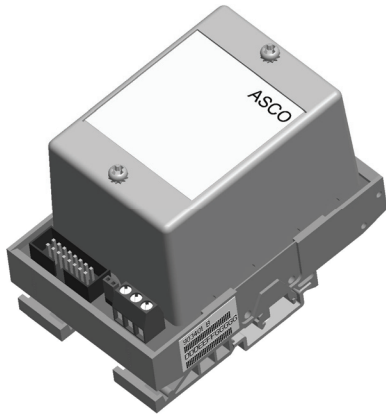


Accessory 1UP Kit 935149 Kit Installation

ASCO® Series 300 Transfer Switches with a Group G Controller



Overview

These kit instructions explain how to install accessory 1UP Kit 935149 on Series 300 transfer switches with a Group G Controller.

Accessory 1UP is a small uninterruptible power supply (UPS) module. It provides limited reserve power (about 3 minutes) to the controller and some accessories during a power outage until the generator starts. The 1UP module recharges when power is restored. Refer to **User's Guide 381333-400** for further information.

Kit Contents

The accessory 1UP kit includes these items:

- 1UP module
- DIN rail
- shake-proof hex nuts (for mounting the DIN rail)
- ribbon cable (to controller or another accessory)

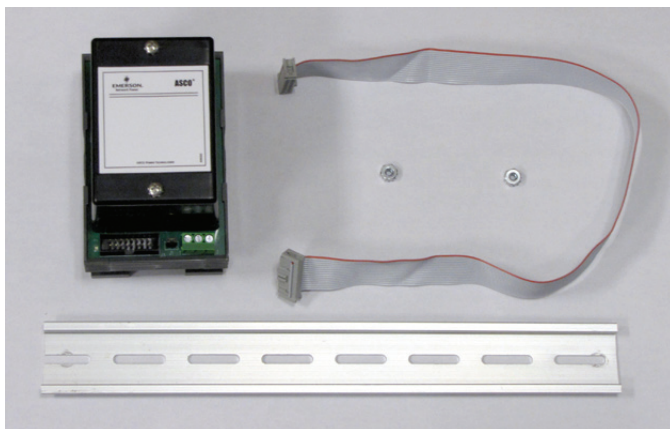


Figure 1. Accessory 1UP UPS module kit.

⚠ DANGER

Hazardous voltage capable of causing shock, burns, or death is used in this transfer switch. Deenergize both normal and emergency power sources before installing the kit.

Installation

1. Deenergize the transfer switch. Then open the enclosure door and verify that all power is off.
2. Mount the DIN rail onto two short studs (on the door) below the controller. If a DIN rail is already installed it may have room for the 1UP module. See Figures 1 and 2.
3. Install the 1UP module onto the DIN rail (right side). Hook the top of the module onto the DIN rail and rock it downward until it snaps in place.
4. Connect the ribbon cable between 1UP module (J3) and controller (J3). If Acc. 18RX relay expansion module(s) are already installed, connect 1UP (J3) to the Acc. 18RX module that has an unconnected (J12A). The 1UP module must be the last item in the chain.

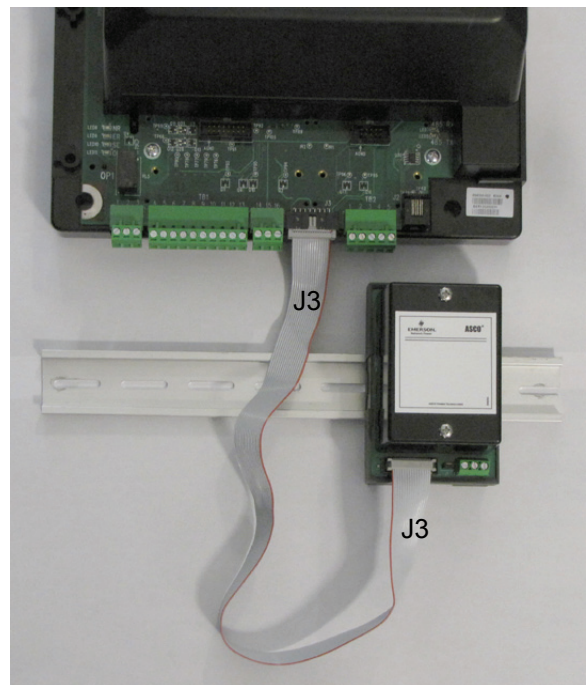


Figure 2. Ribbon cable connections (J3).
(continued on the next page)

381339-314

- 5. After installation, close the enclosure door.
Reenergize the transfer switch.
- 6. Refer to **User's Guide 381333-400** for further information on this accessory.

NOTE

To release the module from the DIN rail carefully pry up the bottom support legs (left and right) together until it releases.

Accessory 1UP Kit Installation Record

Accessory 1UP Kit Number	_____
Installation Date	_____
Transfer Switch Serial Number	_____
Transfer Switch Catalog Number	_____
Installer's Name	_____
Installer's Company	_____
Customer Name	_____
Customer Company	_____